



STANISLAUS RESEARCHER

November-December 2006

October Meeting

"Letting Your Ancestors Introduce Themselves To You With Their Own Written Word"

Millie Starr presented her program using the new lapel mike. It worked well and made it possible for her to move about the room. She read various written words that represent different ancestors. Wills, diaries, probates, and letters gave much insight into the personality of the folks who had written them. Some brought laughter and some brought tears, and some just caused folks to say, "Yeah, that's right."



November is Ancestor Night

Every year our November meeting is Ancestor Night. This is one of the most exciting nights of the year. Everyone looks forward to this program. The program is made up of several members talking about one of their ancestors. Pictures, artifacts, stories, or a poem have all been presented. One year we heard the story of a chair and last year we heard the story of a rock. This year should be even more intriguing. Mark your calendars and plan on having an evening of entertainment like no other. For more information contact Bev Graham, 529-6467.

Pancake Breakfast

Saturday, November 11, 2006 we will gather at Geneva Presbyterian Church between 8 and 11 AM to celebrate the lowly pancake.

This will be our annual Pancake Breakfast social, fundraiser and feed. Please call Vicky Wolff at 529-9430 and let her know how many of your friends, in-laws, outlaws and others you will be bringing.

No December Meeting

Please remember December is one of the two months of the year the Genealogical Society does not have a meeting. See you in January!

CALENDAR

November

Board Meeting	Nov 13
General Meeting	Nov 21
Arkansas Study Group	Nov 13
Writing Group	Nov 16

December

Board Meeting	Dec 11
General Meeting	NONE
Arkansas Study Group	Dec 11
Writing Group	Dec 21

SALT LAKE CITY RESEARCH TRIP**April 29 – May 6, 2007**

The greatest research trip without going to the actual locations your ancestors lived.

Put together your family group sheets/pedigree charts noting where you have and where you need documentation.

Use the familysearch web site OR the local family history libraries to get the names and numbers of microfilm and books of the counties your ancestors lived.

www.familysearch.org

Make a list of the materials you have already used in your research; you may want to reread some of them.

If you need help, call any of the committee members: Bette Locke, Pat Grieve, Jereann Farinha, Bev Krieg, or Dorothy Jenkinson.

Our contracts are being finalized and you are aware how fuel prices have affected travel. At this time, trip expense will be approximately: \$920 for a single room, \$600 for a double room, and \$515 for a triple room. **One** big difference is the airlines are requiring full payment within thirty days. Therefore, we need your deposit as early as possible but no later than December 1.

If you wish to make your own hotel arrangements, call Bette Locke for travel prices.

See “Your ticket” on the reverse side to let us know if you’re planning on going. Mark your calendar!

SALT LAKE CITY RESEARCH TRIP**April 29 – May 6, 2007****“Your Ticket”**

Join us for a week of research in the largest genealogical library in the United States. We will have **thirty** airlines tickets reserved. **\$200 reserves your seat.**

Name: _____
 Address: _____
 Phone: _____ E-mail _____
 Requesting room for:(1)_____ (2)_____ (3)_____ (4)_____
 Roommate(s) or need a roommate: _____

***Deposit are required by December 1.** Three additional payments may be made January 1, February 1, and March 1. Any final payments by April 1.

Mail the reservation form (Your Ticket) and check to Bette Locke, 1010 Thoreau Ct., Modesto CA 95350. **Deposits are required by December 1. Make checks payable to GSSC.**

GSSC Pancake Breakfast

Once again we will have a fall Pancake Breakfast to be held at Geneva Presbyterian Church, on Saturday November 11, 2006, from 8 AM to 11 AM.

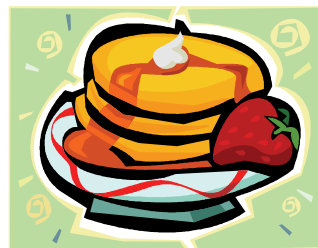
This is a fun social as well as a fund-raiser for GSSC. You will truly experience a great breakfast, lots of fun and fellowship. We will also have a drawing or two for some fun genealogical goodies and fall harvest items.

What better way to celebrate the Fall Harvest Season! Bring yourself, family and neighbors! It is a fun event for all.

Tickets are \$6 per person and can be purchased by calling Vicky Wolff @ 209-529-9430. We need to have a count on who will be there in order for us to buy the appropriate amount of food. Your purchased tickets will be waiting for you at the door the day of the event.

Thank you in advance for your support to GSSC's social and fund-raising endeavors.

Also look forward to a Souper-Supper in February.



Highlights From The Workshop

SOME GERMAN RESULTS

In this class taught by Susan Hammari, she explained the need for correct location information and the perils of not knowing enough about the old German script as well as a lot else. Those who took her class were bubbling with excitement about the wonderful information she offered them and about the results that could come to them if they have the needed info and some luck. I saw Susan working half way through the lunch hour helping one of her students on the computer. And a little bird told me one of her students has ancestors in the same locale. I call that SUCCESS.

FAMILY TREE MAKER, BEGINNER AND INTERMEDIATE; AND FAMILY TREE MAKER ADVANCED

These classes, as always, were full of eager students. Bev Krieg knows so many simple ways to do things others make impossible that they wait all year for her words of wisdom. This time she also did a class for the more advanced FTM users and it too was a great SUCCESS. Pictures and books, as well as trees and reports are all a part of using this fine program.

RELIGIOUS MIGRATIONS

Jim Shuman, stepped forward at the last minute to fill an opening caused by the illness of Eileen Kerr. Thanks Jim. He was a smash hit with the students in his class. He received a number of votes as the best class all day. They all left his class saying "When is he coming back?" Great handouts and super maps to show where all of the various groups originated added to the enjoyment. I heard a number of people expressing their satisfaction with definitions of terms and explanations of how these religions evolved and their place in society.

PAY IT FORWARD

We have all heard of Pay it Back, well now we have learned about **Pay It Forward**. Bev Graham challenged all of her scrapbookers to look at how they are preserving their heritage for the next generation and the ones after. How will they look at the job you have done? Will they admire the preservation of pictures and documents? The names identifying each and every one in the photos? The story of you as well as the history of those who have gone before? What will your legacy be? Many will have a better answer for having attended this class.

USING HISTORICAL NOVELS

Who better than a librarian to talk about Historical Novels and their roll in family history? Well I guess that would be Teresa Grieshaber who has a degree in history in addition to her library degree. Teresa is a very good speaker and has much enthusiasm for family research. She shared a list of sources to locate worthwhile books with historical perspective. This was another class that saw people taking lots of notes and talking to each other while exiting.

Workshop Highlights—cont.

DATING OLD PHOTOGRAPHS

A huge display of dated old pictures set the stage for this class. A brief lecture was presented and handouts were distributed. Then each attendee was to take their own pictures and compare them to the actual photos from different time periods. Most of the class said something like the dog ate my notes and so I forgot to bring a picture or two. But the mean old instructor, Millie Starr, opened up a folder quite full of pictures, so work went on. They looked at clothes, and hair styles and jewelry and of course the type of photo to reach a good decision. Lots of fun.

USING THE COURT SYSTEM FOR RESEARCH

Francie Lloyd came to us from out of town and brought lots of info on the use of Court Records. What they were, why they are of interest and how and where to find them were her main topics. This class too got votes as the most valuable one presented. I heard lots of good comments telling us that this was a hot topic. Thanks, Francie.

SCRAPBOOKING YOUR HERITAGE

Bev Graham emphasized the fact that you do not have to have personal pictures to make a heritage album. She gave a number of websites that contain great historical pictures and information to help you organize and create a family treasure. She shared a number of interesting albums that she has created without the benefit of personal pictures. They are amazing. It can be done.

INTERNET SEARCHING, SCROUNGING AND DIGGING

Millie Starr summed up the topic in a few sentences. Get organized, know what you are looking for, define success, think outside the box, keep trying, use more than one method, if California Immigrants does not find your answer, try Immigrants to California. You have to be creative and willing to work. After this fun summary, lots of ideas were discussed.

Put Vital Information into Context

As family historians, we collect names, dates, and places but too often we fail to look closely at that information. Choose an ancestral family and examine all the information you have gathered. What was the area in which they lived like at the time? Rural, urban, or suburban? Was it an ethnic community? Was it a community of well-to-do professionals or did most of the neighbors list "laborer" as their occupation? How old were the parents when they married? How old were they when they had children? How old were the children when a parent died? If you know the cause of death, was it preceded by a prolonged illness? What impact might the answers to these questions have had on their lives? The implications may also affect the course of your research.

An Expression of Thankfulness

Thank you to the Society for the beautiful card sent to us on the passing of my mother, Mary Merceil (Hilden) Chandler, on August 9, 2006.

During a time such as this we come to realize how much our friends and relatives really mean to us . . .

Your expression of sympathy will always be remembered.

Vicky Wolff

Workshop

The workshop the Society held in October netted \$383.00 for our treasury. While our workshops are not designed to make a profit, it is always nice to see the response and participation from our membership.

Newsletter Mailer

Now that the move to Samaritan Village is official for Bill and Paula Ayers, the Society would like to thank Paula for all of the years of hard work she put in doing all of the work to get our newsletter ready to mail. For many years we published over 300 newsletters a month and Paula would pick them up from the printer, assemble them into the correct order, fold and staple them according to the postal regulations, divide them into separate zip codes and then take them to the Post Office. Thanks, Paula for a job very well done.

If you would like to volunteer to take over the job, please contact any board member. Now we use e-mail and the Internet to send the bulk of our newsletters so we only send out about 50 or so. It is a very easy and rewarding task. Please help out the Society to continue serving our membership.

A New Service



If you need help putting together a scrapbook such as the ones Bev has shown in her programs and at the workshop give her a call. Complete and themed albums are a special area of her expertise. If you can't make your own memory books—Bev will do them for you.

Preservation Tip of the Month

by Becky Schipper

Textiles: If you are storing wool or silk, it is suggested that you line the storage box and interleaf the textiles between the folds with unbuffered acid-free tissue. If the material is linen, cotton, or jute buffered, acid-free tissue should be used.

Family Tree Maker User Tips

Bev Krieg
kb.krieg@sbcglobal.net

When you are entering data on your family, you want to be sure to use some pictures. Does your sister, Sally, really look like Grandma Smith?

Go to the Scrapbook for one of your individuals. The icon is the third under each individual's name when they are the adults of the family. It looks like a small book until you insert a picture or object into the file. Then it is 2/3 of a book with an arrow pointing down on the bottom right corner. The label Scrapbook also lets you know how many pictures or objects are included, i.e. (2).

Of course, I am talking about scanned pictures or ones downloaded from a digital camera. To use one of these pictures in your pedigree chart or family group sheet, there are a couple of "be sure to do this".

- I. Inside the Scrapbook, to the bottom right of each picture is a small box. It appears empty until you put information in for this file. Click on the box.
 - a. You may include a Caption, Date of Origin, and a Description.
 - b. Check marks **must** be included below. At least:
 - i. Preferred Picture/Object #1 for trees
 - ii. Preferred Picture/Object for Fam Grp Sheets
 - c. You may include other check marks.
 - d. Click OK when you are finished.
- II. To include the picture(s) in a Family Group Sheet, go to the icon for Reports, then to Fam Grp Sheet OR to View / Reports / Family Group Sheet.
 - a. Go to the menu bar Contents / Items to Include
 - i. There are a number of items listed in both the right and left boxes. Select and move each of the items back to the left box by clicking on the <<.
 - ii. Now, from the left box, select Standard Page and click >.
 - iii. Click to highlight Standard Page in the right box
 - iv. The Options button is available. Click on it.
 - v. Near the bottom of this window in an area labeled Include in Standard Page.
 1. Click in front of Pictures/Objects
 2. Click OK and OK
 - b. You should now be looking at a Family Group Sheet that includes the picture.
- III. To include picture(s) in a Tree, go to the icon for Tree Charts OR View / Tree Charts / select the chart you want.
 - a. Go to the menu bar Contents / Items to Include, select Pictures/Objects to move to the right column. Select Pictures/Objects in the right column.
 - i. Select Options if it did not open when you selected it.
 - ii. Near the top of this window in an area labeled Select Picture/Object
 1. Select Preferred #1 (or the other preference if you have so selected in the Scrapbook Box)
 2. Click OK and OK
 - b. Your picture(s) should now appear in any Tree Chart you select

To use pictures in any other part of your file, you only have to do part I in the Scrapbook

Give a Child in Your Life Wings!

Let imagination soar! To promote reading and literacy – how else can we research our families! – the Friends of the Modesto Library invite you to the Reading Rainforest Scholastic Book Fair for your holiday shopping. Parents, grandparents, teachers and the community are invited to give wings to their children with the gift of reading this holiday season.

The Fair will be open each day:

Friday November 17	1 - 4 p.m.
Saturday November 18	10 - 4 p.m.
Sunday November 19	12 - 4 p.m.

Modesto Library Auditorium – 1500 I Street

On Saturday from 1-3 pm, the Book Fair will feature a special Family Event with a visit from Clifford the Big Red Dog who will pose for pictures with guests. Proceeds benefit the Modesto Children’s Library and Family Literacy Programs. Contact Anne Britton 572-2626 for information.

Nominating Committee

From Bev Johnson, Nominating Committee Chair

Many thanks to Bev Krieg, Theo Schock and Millie Starr for their time and input into the nominating process.

Nominations for the GSSC 2007 elected offices are:

President	Millie Starr
1st Vice President	Bev Graham
2nd Vice President	Janet Lancaster
Recording Secretary	Cleda Lane
Treasurer	Dick Anderson
Directors-at-Large	Bev Krieg
	Theo Schock
	Bev Johnson
	Nancy Robinson
	Wayne Black

The election of officers will take place at the November General Meeting. At that time additional nominations may be made and will be placed on the ballot with prior approval of the nominee . If any member is interested in holding an elected office and has not been contacted, please contact Bev Johnson, 526-5009 or jbevjohnson1@aol.com prior to the general meeting.

Family History Books On-Line

The LDS Family History Library has begun digitizing and making available on the Internet all of the Family History books in their collection. About 5000 books have been digitized and are available, and they have announced that they are adding about 100 titles a week to the on-line Family History collection. <http://www.lib.byu.edu/fhc/>

WELCOME NEW & RETURNING MEMBERS

**We have 249 2006 members—
10/23/06 & 45 2007 members!
Keep them coming.**

We wish to welcome all new members for the year 2007. We hope you have found our society helpful, knowledgeable, and resourceful.

We look forward to welcoming many more new members in the year 2007.

RETURNING MEMBERS:

Doris Whaley Modesto, CA 95350

If there are **any** corrections, changes in your telephone number, mailing address, or e-mail address **please** send information to Maybelle Allen: telephone (209) 523-0593; e-mail rmallen213@sbcglobal.net, or write to GSSC, PO Box A, Modesto, CA 95352-3660; Attn. Maybelle.

Membership dues:

\$20.00 single membership

\$27.50 Family membership

Newsletter subscription included with both memberships.

**The General Meeting is at Geneva
Presbyterian Church, 1229 E. Fairmont,
Modesto, CA**

**7:00 PM on the 3rd Tuesday, except in
July and December**

HAVE YOU CHANGED YOUR EMAIL ADDRESS? IN THE LAST 6 MONTHS? THE LAST YEAR? IF SO, PLEASE, EMAIL CHANGES TO

>gssc@worldnet.att.net <. On the subject line just put 'updating email address.' If your name is not included in your email address, **please, please**, put it in the body of the email. If you'd do it the day you receive your newsletter, it'd be greatly appreciated.

GSSC Web Page

[Http://www.cagenweb.com/stanislaus/gssc.html](http://www.cagenweb.com/stanislaus/gssc.html)

MEMBERSHIP RENEWAL TIME

Our Standing Rules read: #3 Annual dues will be \$20.00 single membership, \$27.50 family (living at same address), and payable on or before January 31 of each year. **Dues not received by February 15 are delinquent and member will not receive the March newsletter.** New members joining after October 1 are paid for the remainder of the current year and the following calendar year.

PLEASE CHECK YOUR MAILING LABEL

326	2006
Jane Doe	
1234 My Place Avenue Modesto, CA 95355-4820	

If it reads **2006** it is time to renew your membership. **Thank You.**

IT'S MEMBERSHIP RENEWAL TIME!

With this issue you will find a renewal form. Again, we ask, *please*, fill it out and include it with your check.

Nicknames Website

<http://www.genealogytoday.com/genealogy/enoch/nicknames.html>



G.S.S.C. CA.
P.O. Box A
Modesto, CA
95352-3660

Contents

October Meeting	101
November Is Ancestor Night	101
Pancake Breakfast	101
No December Meeting	101
Salt Lake City Research Trip	102
GSSC Pancake Breakfast	103
Highlights From The Workshop	104
An Expression of Thanks	106
Workshop	106
Newsletter Mailer	106
A New Service	106
Preservation Tip of the Month	106
Family Tree Maker User Tips	107
Give A Child in Your Life Wings	108
Nominating Committee	108
Family History Books On-Line	108
Welcome New Members	109
Nicknames Website	109

*Deadline for the STANISLAUS RESEARCHER is
the Society Board Meeting, second Monday of each month*

**THE STANISLAUS RESEARCHER MAKES EVERY EFFORT
TO PROVIDE ONLY VERIFIED INFORMATION, HOWEVER,
WE ASSUME NO RESPONSIBILITY FOR ERRORS**